

Overview and Scrutiny Committee

| | |
|------------------------|---|
| Held at: | Council Chamber - Civic Centre Folkestone |
| Date: | Tuesday, 31 October 2023 |
| Present: | Councillors James Butcher, Bridget Chapman, Laura Davison (Chair), Anita Jones, Alan Martin, Elaine Martin, Connor McConville and John Wing (Vice-Chair). |
| Apologies for Absence: | Councillor David Godfrey. |
| Officers Present: | Scott Butler (Community Safety Specialist), Ewan Green (Director of Strategy and Resources), Jyotsna Leney (Health, Wellbeing and Partnership Senior Specialist), Susan Priest (Chief Executive) and Karen Weller (Environmental Protection Senior Specialist), Andrew Rush (Chief Officer Place & Regulatory Services), Jake Hamilton (Committee Services Officer) and Sue Lewis (Committee Services Officer). |
| Others Present: | Inspector James Wyles (Kent Police), Sam O'Connor (Home Start Shepway), Rebecca Button (KCC), Councillors Rebecca Shoob and Mike Blakemore. |

22. **Declarations of Interest**

There were no declarations of interest.

23. **Minutes**

The minutes of the meeting held on 26 September 2023 were submitted, approved, and signed by the Chair.

24. **Minutes of the Finance and Performance Sub-Committee**

The minutes of the meeting held on 10 October 2023 were submitted, approved, and signed by the Chair.

25. **Cabinet Member updates**

In accordance with the Constitution Councillor Rebecca Shoob, Cabinet Member for Housing and Homelessness provided the Committee with a verbal update which included the following:

- The Councils housing stock and its current progress on retrofitting.
- An update on the Council Housing Repairs Contract.
- Procurement update in relation to Lifeline365.
- It was confirmed that the Council had just concluded its tenant's satisfaction survey, which the results will hopefully be coming to Overview and Scrutiny in January 2024.
- An update on Housing Strategy, the HRA Business plan (which will be coming to Overview and Scrutiny in November 2023), Housing Waiting List and Homelessness (20 verified cases of rough sleepers) and (35 cases currently in temporary accommodation) the team are also working with private landlords to try and make their accommodation available to the Council.
- Cost of Living Crisis, the Council is working with other authorities to put the case to Government addressing the current crisis.

Following Councillors Rebecca Shoob's update, members raised several points, including the following:

- What is the status of the Council's Housing Waiting List?
- The temporary accommodation figures quoted, are they families housed within the district or outside?
- Where can residents/members get information regarding the current Lifeline365 situation?

Councillor Rebecca Shoob, responded to points raised by members:

- The Council has roughly 1500 individuals currently on the Housing waiting list. The Council is aware of its need for more housing.
- The 35 cases placed in temporary accommodation are individuals being supported regardless of where they are.
- Councillor Shoob will provide the committee with information on where residents/members can find more information regarding Lifeline365 at a later date.

Councillor Mike Blakemore, Cabinet Member for Community and Collaboration also provided the Committee with a verbal update which included the following:

- An update of meetings attended throughout the district and places visited, such as the community hubs, Cycle Shepway.
- KCC workshops and the Launch of "Move Together".
- The Council's success in procuring Safer Streets funding from Kents Police and Crime Commissioner.
- An update regarding the new community policing model.

- Health and Wellbeing – Councillor Blakemore, advised the Committee of the current health measures which are declining within the district. Folkestone and Hythe District has been ranked 84 out of 317 local authorities.
- Folkestone Library – Councillor Blakemore wrote to KCC regarding the closure of the library. KCC responded by confirming that they could not afford to carry out the repairs needed and were looking elsewhere for funding. However, it was suggested that a meeting is due to take place where residents would discuss the future aspirations for Grace Hill.
- Councillor Blakemore also advised the Committee that he wrote to the leader of KCC regarding the proposed cuts to youth services.
- An update on the Mobile Food service.

Following Councillors Mike Blakemore update, members raised several points, including the following:

- What is the current progress on the shared prosperity funding?
- With the remaining funding is the council looking to introduce new projects or support the current projects?
- What is the current progress on Warm Spaces?

Councillor Mike Blakemore and Officers responded to points raised by the Committee:

- There are two parts to the shared prosperity funding, the Council is in year two of three. Current initiatives include, the Mobile Food Van, which is now on the road, cookery classes with aims to support individuals in becoming self-sufficient.
- The Council had to submit an investment plan to UK SDF, which outlines the outcomes and targets. However, potential future projects include community gardens.
- Warm Spaces, the Council is currently in the process of asking community organisations, and then the information will be collated and shared on the Councils website.

26. **Folkestone and Hythe Community Safety Partnership Plan Update**

Mr Scott Butler, Community Safety Specialist introduced the report (OS/23/04) and explained that Members would receive a presentation which included updates from some of the Community Safety Partnership.

The report/presentation provided the committee with an update on the Folkestone and Hythe Community Safety Partnership (CSP), its priorities, activities, CSP action plan, PREVENT and statistical data including, Crime within the District, deprivation, Fire and Hospital Alcohol Data.

Please see link to the current CSP three-year plan:

<https://www.folkestone-hythe.gov.uk/downloads/file/1097/community-safety-plan-2021-2024>

Inspector Wyles of Kent Police, provided the Committee with an update which included:

- Kent Control Strategy.
- NHP Model, which was piloted in Folkestone Town Centre. This model detailed the new community policing structure, which included the following teams:
 - Child Centred Policing Team (CCPT).
 - Neighbourhood Task Force (NTF).
 - Beat Team
 - Rural Task Force (RTF), and
 - Prevention Hub
- Multi-Agency Targeted Operations, including:
 - Violence against woman and girls (VAWG)
 - OP Sentry (Road safety in the district)
 - OP Piglet (Tackling organised cooking oil theft)
 - OP Assist (Environment & Waste Crime)
 - OP Chinook (NTF response to targeted area of concerns)
 - OP Sceptre (Tackling Knife Crime)
 - OP Drummer.
- My Community Voice.

Following the presentation members raised the following points:

- Noticeable differences in Police presents with the new NHP community policing model.
- How is Kent Police tackling hate crime within the community?
- Prospects of youth clubs closing, will potentially result in higher crime. Is there any support within the CSP to keep these youth clubs open?
- Why is the crime data (as seen in the presentation) presented by wards?
- Could Kent Police or the CSP run more engagement sessions, encouraging residents on the correct reporting procedures.
- Has CSP priorities change from offending to re-offending?
- Can the keys on the CSP Action Plan be explained?
- Will the integration of the migrant community action plan be shared?
- Can officers expand on “Improving prospects for youths” and Taxi safety (as seen on the action plan)?
- Will the CSP plans be coming to Overview and Scrutiny?
- Can we have a verbal update from KCC and Home Start Shepway on their current activities?

Officers responded to several points raised by members, including:

- How to tackle hate crimes are discussed regularly in meetings, including those with CSU and multi-agency meetings concerning Napier Barracks which includes work with the voluntary sector and projects with organisations such as friends or Napier.
- CSP does not receive much direct funding, however, the partnership is always looking to seek further funding where possible. The Partnership would support fund raising projects for the youth club closures.
- The crime data is collated by the analytical team; however, the committee's feedback will be passed onto the team.
- The police recognise under reporting, the high demand on 101 call centres and that the online reporting mechanisms may not be suitable for everyone.
- CSP priorities have not changed when it comes to offending, it will continue to tackle offending. However, the partnership is also working with the probation service to try and tackle re-offending.
- The keys on the action plan are for office use only, it is to help officers keep track on the status of projects.
- The integration of migrant community action plan is ongoing. The CSP are having discussions with other agencies and the information pertaining to the action plan is sensitive and therefore cannot be shared with the Committee.
- Improving prospects for youth is diversionary work. Identifying and diverting youths from criminality.
- The CSP is working to support taxi's, with the potential to utilise Taxi Driver Knowledge regarding crime (i.e., drugs, sex working/brothels).
- With regards to whether the CSP plan will be coming back to this committee. It is for the Corporate Leadership Team to decide.
- KCC and Home Start Shepway officers updated the committee with their recent activity, including, the one stop shop supporting victims of domestic abuse, the Safeguarding Road Show, which brings awareness of domestic abuse, prevent and knife crime to youths within school settings and domestic abuse champions:
 - <https://www.domesticabuseservices.org.uk/latest-news-articles-advice/become-an-end-domestic-abuse-employer-champion/> (Employer Form).
 - <https://forms.office.com/e/yW2R3mfjpu> (Employee Form).

The Committee resolved to receive and note report OS/23/04 and the Community Safety Partnership updates.

This page is intentionally left blank



FOLKESTONE & HYTHE DISTRICT
**COMMUNITY SAFETY
PARTNERSHIP**

Community Safety Partners

Folkestone & Hythe Community Safety Partnership (CSP) and Community Safety Unit (CSU) works together to drive multi-agency practices to achieve the best outcomes for the community.

Our Community Safety Partnership consists of 6 statutory partners as well as over 40 other key agencies who form the CSU.

Page 8



FOLKESTONE & HYTHE DISTRICT
**COMMUNITY SAFETY
PARTNERSHIP**



**Kent Fire &
Rescue Service**



**Kent
Police**



South Kent Coast



FOLKESTONE & HYTHE DISTRICT
**COMMUNITY SAFETY
PARTNERSHIP**

As statutory requirement of the Crime and Disorder Act 1998 and the Police Reform Act 2002, the Community Safety Partnership (CSP) exists to ensure partners collaborate to tackle crime and anti-social behaviour.

Page 5

Together we are committed to:

- Working together to make the district a safe place to work, live and enjoy;
- Reducing anti-social behaviour and crime and disorder;
- Building stronger communities.

We identify local priorities by monitoring crime patterns, developing an annual strategic assessment, consultation with communities and partners. These are set by the Community Safety Partnership, and published in the Community Safety Plan

FOLKESTONE & HYTHE DISTRICT COMMUNITY SAFETY PARTNERSHIP PLAN

1 April 2021 - 31 March 2024



FOLKESTONE & HYTHE
COMMUNITY SAFETY
PARTNERSHIP





FOLKESTONE & HYTHE DISTRICT
COMMUNITY SAFETY
PARTNERSHIP

CSP Structure



Page 11

- 3-year safety plan
- Subgroups are key delivery arms for the priorities
- CSU is the operational arm of the CSP

Subgroup Chairs

Safeguarding and Domestic Abuse

Rebekah Button, Integrated Family Service Manager, Kent County Council
Sam O'Connor, CEO, Home-Start Shepway

Crime and Community Resilience

DI James Wyles, CSU Inspector, Kent Police
Garry Scott, Senior Probation Officer

Community Safety

Scott Butler, Community Safety Specialist, FHDC
Tara Liam, Community Safety Officer, FHDC

CSP Priorities



Community Safety Partnership priorities – 2024

Safeguarding & Domestic Abuse Subgroup

- Domestic abuse
- Mental health
- Drugs and alcohol
- Safeguarding children and adults
- District Contextual Safeguarding Meeting (DCSM) – Children
- Missing children

Crime & Community Resilience

- Modern slavery and human trafficking
- Cuckooing, gangs, county lines and criminal exploitation
- Fraud
- Financial and acquisitive crime
- Drug dealing
- Integrated Offender Management
- Hate/mate crime
- Prevent strategy
- Violence reduction
- Serious and organised crime (SOC) and Organised crime groups (OCGs)
- District Vulnerabilities Panel (DVP) – adults

- Reduce Re-offending

Community Safety Unit

- Anti-social behaviour
- Public Spaces Protection Order
- Environmental crime/environmental health
- Town centres
- Licensing
- Events
- Hotspot locations
- Substance misuse
- Diversionary activities
- Housing
- Homeless
- High risk adults and young people
- Community triggers
- Prison releases
- Community protection warnings and community penalty notices
- Unauthorised encampments

Cross Cutting Themes

Violence Reduction – Including VAWG & PREVENT awareness

Health & Wellbeing

Young People

Delivery of some of the activities that the CSP is responsible for occurs through a range of multi-agency meetings and task and finish groups.

Brief 'Strategic Assessment' Overview



FOLKESTONE & HYTHE DISTRICT
**COMMUNITY SAFETY
PARTNERSHIP**

Population

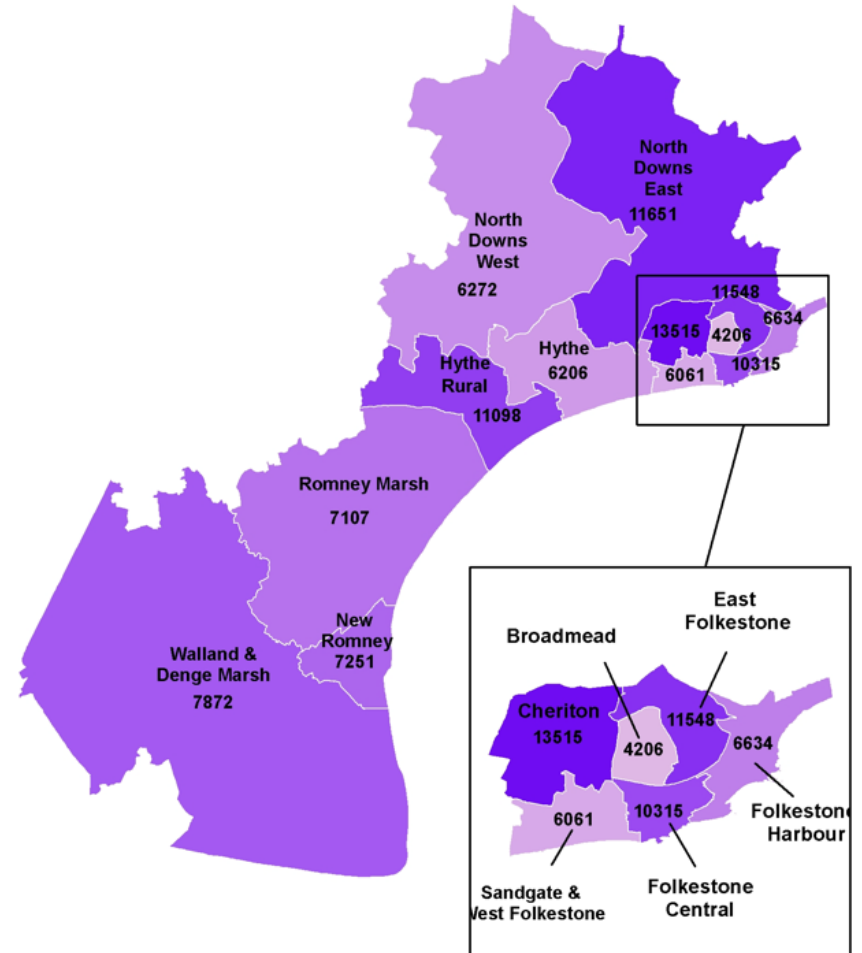
Folkestone urban area is home to **47.77%** of the total population

Page 15

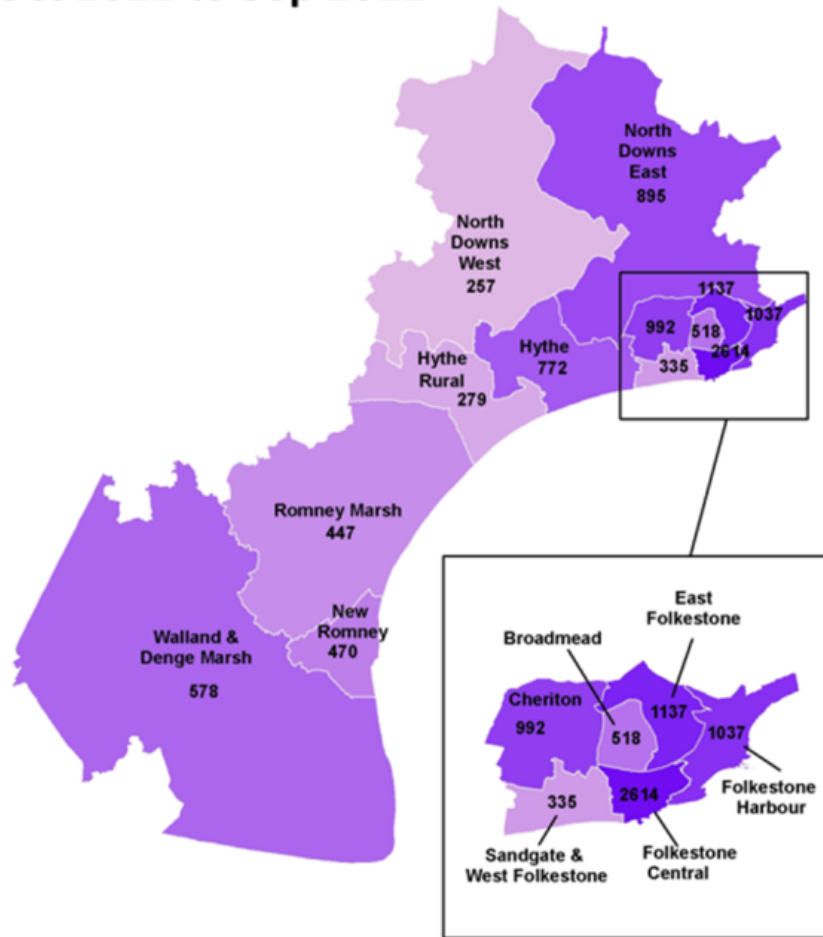
15.55% of the district's residents live in Hythe urban area

The remaining **36.68%** live across the remaining sub urban and rural areas.

Population by Ward: 2021



Crime Totals by Ward Oct 2021 to Sep 2022



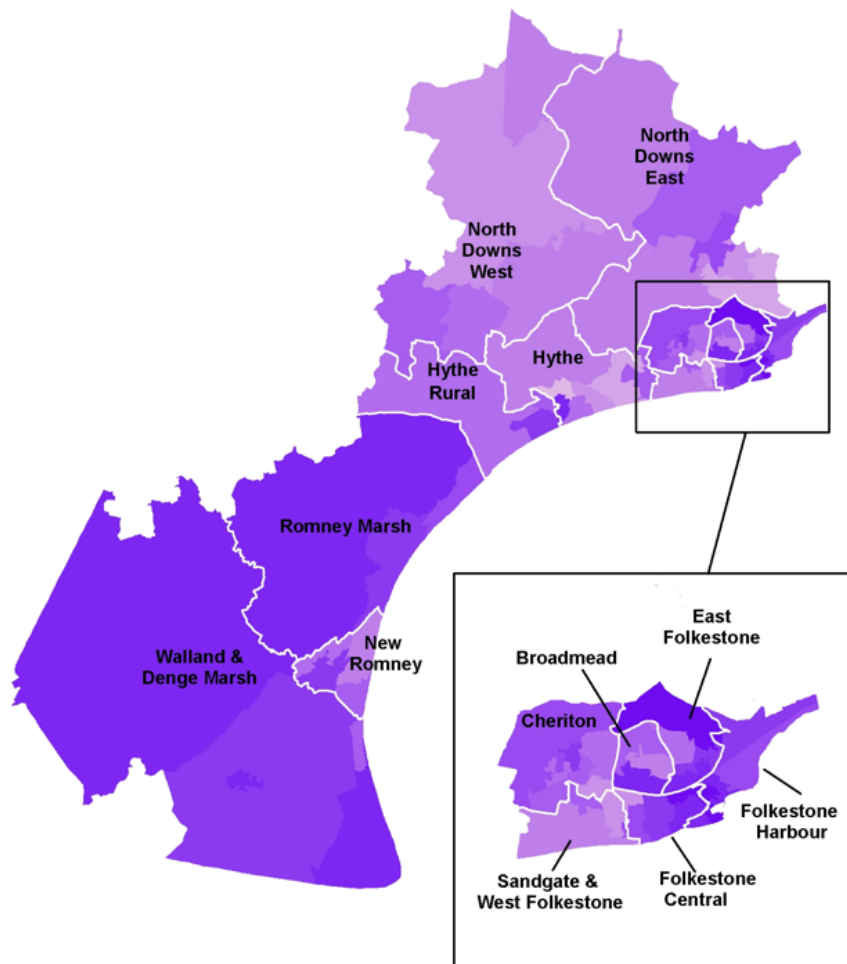
Crime Data

The graph shows a total of all crime for each ward in the Folkestone & Hythe district between 01/10/2021 – 30/09/2022.

Folkestone Central ward has the highest total crimes with **2614**

North Downs West has the least total crimes with **257**.

Index of Multiple Deprivation 2019



Page 17

Deprivation Data

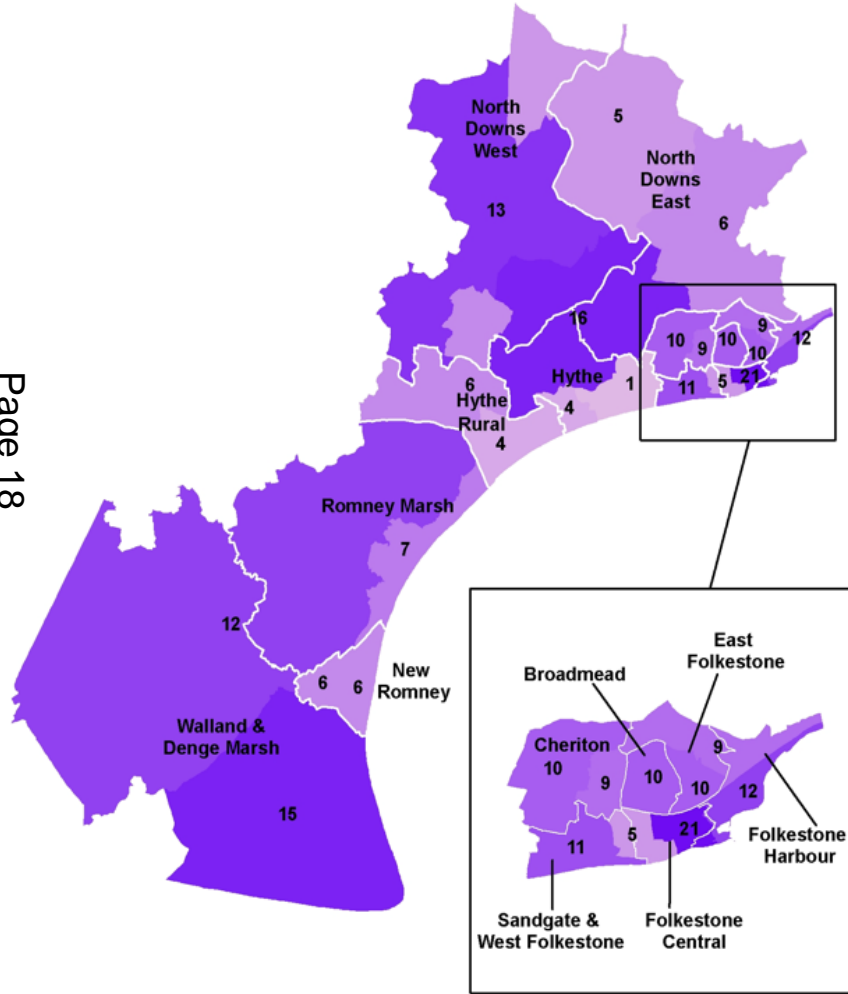
On the national ranking, Folkestone & Hythe has moved up by **17** positions from **101st** in 2015 to **84th** most deprived in 2019, which indicates that the level of deprivation in Folkestone & Hythe has **increased**, relative to other areas in England.

Folkestone & Hythe's unemployment rate is currently **3.9%** which is higher than the county average of **3.2%** and the national average of **3.7%**.

Total Fires:

October 2020 - September 2021

Page 18



Fire Data

Map shows the number of fires recorded by ward

The Ward boundaries are the historic Wards.

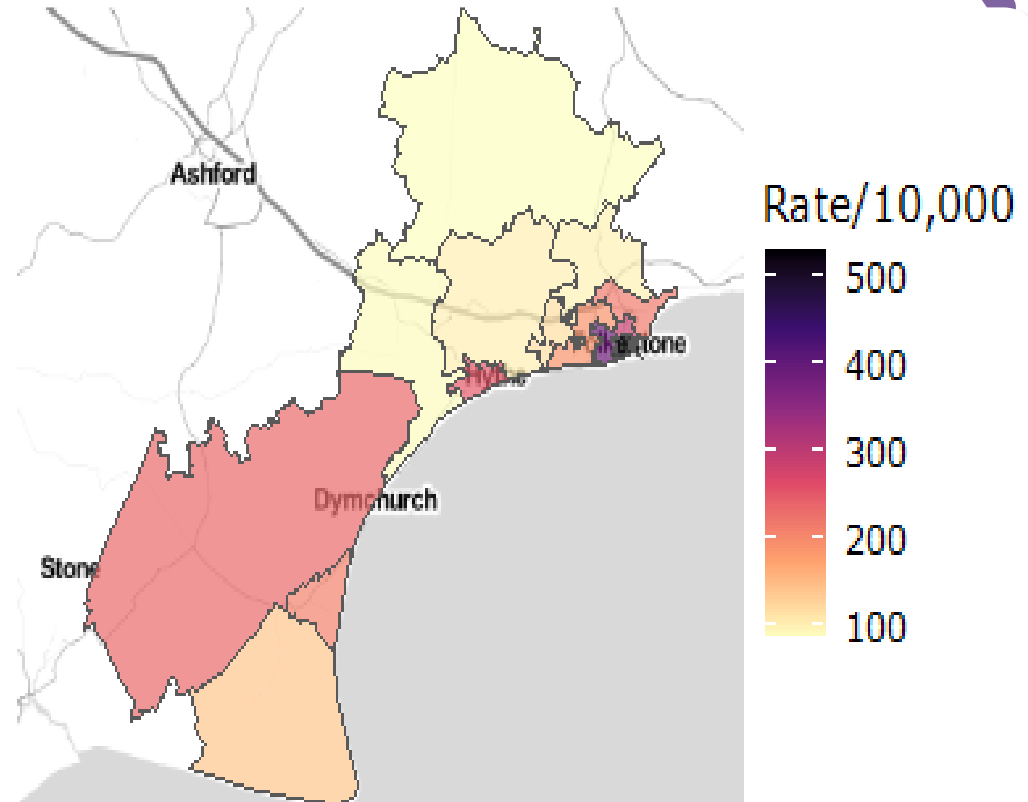
it is not a surprise to see that some of the darker areas are the same as those areas of higher deprivation.

Hospital Alcohol Data

The map shows emergency admissions for alcohol, count of admissions by patient MSOA, 2021/22 all ages.

Page 19

Again, we can compare the hospital alcohol admissions directly correlate with deprivation.



Base map source:
Map tiles by Stamen Design, under CC BY 3.0. Data by OpenStreetMap, under ODbL
Digital boundary source:
Office for National Statistics licensed under the Open Government Licence v.3.0
Contains OS data © Crown copyright and database right 2023

Community Safety 2023/24



Community Safety Partnership 2023-24 Action Plan

| Project Title | Lead | Partner Agencies | Community Safety | Reducing Offending | Safeguarding | Update | RAG |
|---------------------------------------|---|--|---|--------------------|--------------------|---|-----|
| | | | Young People | Tackling Violence | Health & Wellbeing | | |
| Safe Spaces | FHDC CSU | All Agencies | To expand the Safe Space Project across Folkestone Town, incorporating new and existing partners, address the A&CC NTE, Train with Partners, Pastors offering visibility and engagement, and A&CC Warden to provide similar. Licensing, bars and NTE awareness raising. License premises have knowledge training of safe spaces | | | Health, Redox Centre, FE1, South Kent Mind, Folkestone National Theatre and additional retail outlets at Bouvère Place are all interested - Training to be initiated to follow. | |
| Safety Map | FHDC & Kent Police CSU | All Agencies | Development of Safe Routes / Mapping of CCTV and lighting / Utilising Leveling Up corner funding - include BBN / Safe Spaces / Dots & Emergency Trauma Packs - SECAM contact? BBN - safe map | | | Included in SDSF Application | |
| Safe Summer Programme | FHDC & Kent Police CSU | All Agencies | POP up hubs - Boat races, Water safety, RFLS & NCI, Air show, PRIDE, CHARITY/ARI Carnival 15/7, NTE, PSPO awareness, Free station Clean event, CANIBER Rave overflow - Theft robbery awareness and Police enforcement, Manufacture Festival A&C | | | Complete | |
| Safe Winter Programme | FHDC & Kent Police CSU | All Agencies | National Safeguarding Week, 14 Days of Action, Winter Ice & Events, CHRISTMAS, Halloween, NY, Warm Spaces. | | | N&S are doing Winter Live! events at Dover and Thanet, and do not have capacity to come to Folkestone this year. | |
| OP CHANDOK | FHDC & Kent Police CSU | All Agencies | Multi agency area in area of high concern to undertake housing assessments, property inspections, tackle rough sleeping, fire safety, fire stopping, street cleaning, youth engagement, ward quarterly across the district. | | | 2 complete - Moore Close & The Dale Hallway - Action List/ Winter 2023 year FE1 Housing List | |
| Local Engagement Meetings (LEMs) | FHDC & Kent Police CSU | All Agencies | Quarterly Community Conversations, across the district to provide feedback and hear concerns from locals. | | | 7 of 8 shops completed - | |
| Youth Roadshow Yr 11 | Research Button & CCPT | All Agencies | Training Roadshow to schools to educate on health (lifestyle, relationships, social media impact, UV, PREVENT, consent, alcohol). | | | 7 of 8 schools completed - | |
| Safety in Action Yr 6-8 | SALUS & CCPT | All Agencies | Young Person Safety event - Water Safety - travel / transport / positive friendship groups / social media etc. | | | Planned for March '24 | |
| Targeted Operations | FHDC / KP | | Joint enforcement operations in the town centre - street crime, nuisance, common environment - enforcing and control PSPO and dog control PSPO. Pledge to continue patrolling and to issue tickets for Environmental Crime - Clutter in areas in the district - Held 6 pop ups over the year. | | | | |
| OP Ledger | | | Response to accessing and sexual assault threat to U&V's Priorities. | | | | |
| OP FROLET | | | Tackling Cooking oil theft | | | | |
| OP ASSIST | Andrea Clarke | KP FHDC | Waste Crime, Vehicle stops, Burglary Crime | | | | |
| Custody Drug Testing | James Wyles / Angela Stebbins | Kent Police / Forward Trust | Improve referral process from KP to Forward Trust under the test on arrival scheme. Probation to be involved in the process. Forward Trust to provide support to young people in custody. Referrals | | | | |
| Detached Youth Engagement | Jordan Drexler | KCC Youth - LCPD / DCCS / OCU | Identify and engage with young people in the area who are at risk of becoming detached. Support them to get back into education or training. Referrals | | | | |
| NTE Safety | Briony Williams | FHDC / KP / Kent Police / V&V | Prevention of NTE through signage, site and monitoring, implementing test bar zone scheme, accreditation scheme for licensed premises. | | | | |
| Taxi Safety | Briony Williams | FHDC / Kent Police / OCU | Regulating Chops, DA and taxi working. Brokers. Opportunity for resident capture. Plus ensure that as an enforcement officer to provide back and make the public more aware of what to look out for. | | | | |
| Urban Pastors | CEC | | Identify and engage with young people in the area who are at risk of becoming detached. Support them to get back into education or training. Referrals | | | | |
| FCO Taking the Lead | Clare Bracken | South Eastern Railway | Identifying ways to create community based support and working with young people to ensure safe in urban environments, raise awareness, County lines, youth gangs, individuals using the railway to commit crime. | | | Need more info | |
| Safeguarding U&V / C&C | Justina Leney, Alex Sherman | Kent Police / NCT / PREVENT / Licensing, Border Force, Safeguarding, HOME OFFICE | Multi agency approach to safeguarding migrant children in areas. Deliver suite of training. Border Force can provide training / Progress in progress. | | | CREATE Action plan - Objectives, OP Hockey - Work with FC partners. | |
| Disrupt Road Network / Community hubs | Justina Leney, Alex Sherman, Zoe WILSON 4501333 | FHDC - Age UK / DPN - V&V | Support more with vulnerable individuals. Attend events and do a whole lot of support across the district. Raise awareness etc. | | | | |
| Improving prospects for youth | KP, Sports Trust, FHDC / KCC / CHANDOK | | Identifying and diverting youths from criminality and improving outcomes | | | Apprentices Project run by Youth U&V at 3 HHS / V&V / Intervention & Support. | |
| Mitigation of migrant community | Justina Leney | FHDC/KP/FHDC | Working with all migrants to break down barriers and make them feel included in their local community. | | | Working with Friends of Haber to build relationships and tackle community tensions. Polishing table and learn projects. | |
| Alcohol awareness support | Annika | Forward Trust / OCU / HOME OFFICE | Deliver alcohol awareness presentation at local venues. Followed by 2 workshops on a 1:1 basis with a recovery worker. | | | CHECK to see if happening | |
| Violence Reduction | Casey Warden / VRU | DCCM partners | Deliver alcohol awareness presentation at local venues. Followed by 2 workshops on a 1:1 basis with a recovery worker. | | | Completed targeted prevention for youth events identified as risk from this forum to receive boating training (SE1) | |
| The sports trust | FHDC | Justina Leney | Activities like events for under 13s in regular times, yoga and Pilates, South Kent mind. Facilities, staff programme, young adults, live in care, under 16s, groups. To be made up and ready. Apply for funding to support groups and focus groups. Join youth road show. Careers aft at lunch events. Three hrs / FE1. See sports. Funding opportunities for services to include DIVERSION - YOUTH ACTIVITIES - Sports funding - access that funding to vulnerable at risk people, engaged in sports, better sessions | | | DUPLICATION - Check with OCU - Plus. Disposition & Partner training | |
| | FHDC | Justina Leney | | | | | |
| | LCPD | Justina Leney / Alex Sherman | Safe spaces for breast feeding women | | | Jayne Hoque - Justina | |
| Community Training & Spreading | | | | | | | |
| | NCI | | National Hate Crime Campaign - raising awareness of hate crime and how to report it. Happy to share. Considering a case programme - currently working safeguarding before go. Hate funding across Kent (A&C) to deliver the Forward Trust housing service across the district. Substance abuse and housing - will share into once more. | | | AWAITING CONFIRMATION | |
| Improve MH outcomes | Andrea Drenthill | Forward Trust | Share information on MH Training. Partners to share information here up to date information. RESOURCES / ASSETS from partner agencies where needed. | | | | |
| Supporting vulnerable people | Diane | FCO Training / Theresa | Working with police and partners to identify and protect the most vulnerable in the community. | | | | |
| Improving digital skills/awareness | Lindsay / PCN | Fit OP agencies | Raise awareness to other organisations of what training and/or services are available with the digital technology. Linked to A&C reporting and by Community Voice. | | | | |
| Football Haver | Doris | Doris | Continue development of activities to support alternative things to do rather than being on the streets. Provide 12/13. Mental health support to help the boys. | | | | |
| PREVENT | Justina Leney | | Engage the PREVENT community effort engage with the is done through the OCU in terms of events and provides awareness through letters and OCU attendance. | | | | |
| Health | Jo Martins | | Plans to engage with 11+ groups, men's group, services users living out of hours - day unlimited - CA Champion Trainer. | | | | |
| Lifestyle/justice | Briony Williamson | | awareness programmes on drinking habits | | | Scheduled for winter safety package with UK of posters in the with ES funding. | |
| Partner Training | | | | | | | |
| one day / half | FCO / H&V | | CA Training | | | | |
| Border Force | Jo Martin, Clive Hurd | | Self group and CA training | | | | |
| PREVENT development | Diane | ICE/Prevent | Awareness training to all partners and acting as a point of contact for intelligence / partners | | | Delivered and ongoing | |
| Football Haver | Doris | | Engage PREVENT having practical training for primary care | | | | |
| FCO - Community Nurse | Lindsay / Clive | | Continue development of activities to support alternative things to do rather than being on the streets. Provide 12/13. Mental health support to help the boys. | | | | |
| Railway safe space | Lindsay | SE Trans | Looking for individuals for support, where needed - OP support | | | Bring into OUP | |
| Members Training | Justina Leney | FHDC | FCO agencies informed of what shared training sessions could be potentially used as safer spaces. Licensing to be reviewed people informed of when new safe spaces come online. Train needs expertise in the following: Community Safety Unit, Community Safety Partnerships, Housing Projects and Prevent. | | | V&V's events being held at both train stations | |

Page 20

Local Engagement Meetings (LEMs)

Safety Campaigns

- Safeguarding School Roadshow
- Safe NTE focus
- Safe Summer / Winter campaigns
- PSPO enforcement
- Joint operations

CSP Forums



FOLKESTONE

Safer Streets



FOLKESTONE & HYTHE DISTRICT
COMMUNITY SAFETY
PARTNERSHIP

Our funding application was for Folkestone Central Ward (LSOA Shepway 014C). This area was chosen due to the crime data and statistics which met the funding requirements.

Total funding confirmed £335,546.64

The funding will seek to target and reduce sexual offences / accosting's, stalking and harassment, violence against the person, retail theft, ASB, theft from motor vehicle / vehicle interference, burglary (commercial), theft from the person and drug offences, alongside the secondary crime type of criminal damage.

Project delivery will include:

- Upgrading the Folkestone Town Council CCTV network,
- Upgrade and re-connect 5 deployable CCTV cameras,
- Upgrade the Folkestone Area Partnership Against Crime (FAPAC) radio network,
- Window wraps for empty shop fronts,
- Active Bystander Training, VAWG Training and Contextual Safeguarding Training,
- Youth Outreach to tackle ASB,
- Map and Signpost Safe Routes,
- Graffiti and litter removal,
- Develop a Safe Taxi Scheme and safety improvements to the taxi ranks,
- Support the Urban Pastors,
- Establish a new Neighbourhood Watch area and promote messaging systems,
- Promote Holli Guard App.

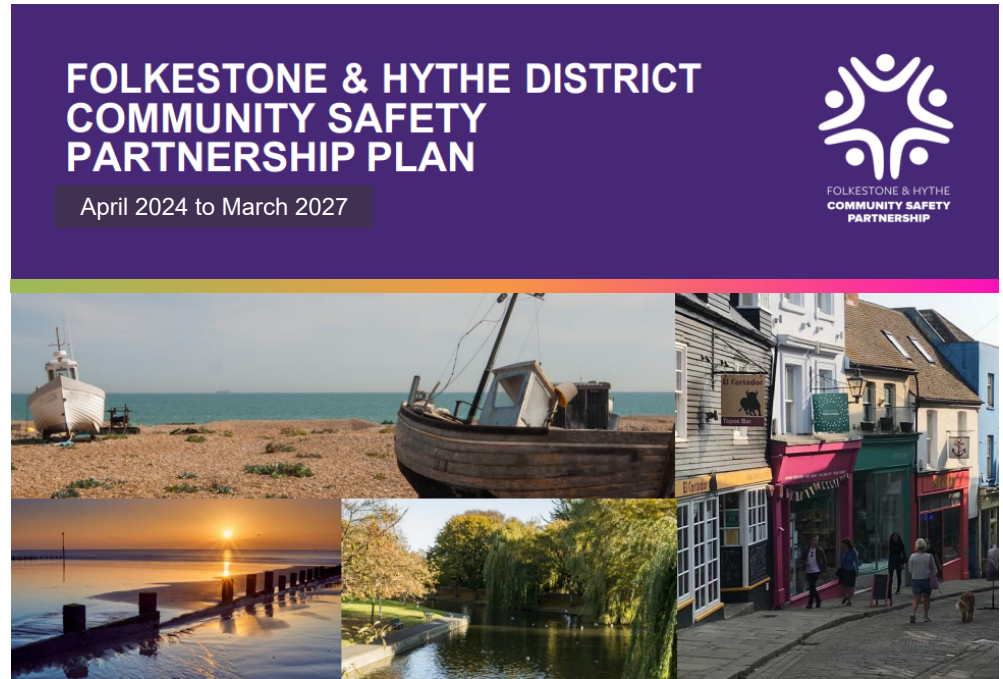


Project Delivery Stakeholders: PCC, Kent Police, KCC, Rising Sun, Home Start, Urban Pastors, FHDC CSU, Licensing, FAPAC, Folkestone Town Council, Neighbourhood Watch, Bouverie Place, and NSL.

CSP 24-27 Year Plan

- Currently being drafted for CLT
- Same foundations as current plan
- Removal of 'Coronavirus and withdrawal of the United Kingdom from the European Union (Brexit)'

Page 22



- More emphasis on supporting young people, health and wellbeing.
- Inclusion of Safer Streets project, with best practice being used across district.

Crime & Community Resilience

DI 12365 James WYLES

Page 23



**Kent
Police**

Protecting and serving the people of Kent

Control Strategy



Prevention Hub

Page 25

Child Centred
Policing Team
(CCPT)

Neighbourhood
Task Force (NTF)

Beat Team

Rural Task Force
(RTF)

CCPT – Blended

- Prevention and early intervention with young people
- Engagement with schools and higher education
- Problem solving with partners
- Dealing with repeat victim/offender/location
- Identifying vulnerability and exploitation
- Youth outcomes

NTF - Blended

- Enhanced problem solving
- “Drag and drop” into high harm
- Supporting Beat Officers
- Visible targeted activity
- Seasonal demand/county operations
- Working collaboratively with the community, partners and internal departments to reduce harm through problem solving

Beat Team

- Visible and accessible presence
- Local ownership of problems/repeat/high harm
- Supporting seasonal demand NTE and VAWG
- Retail crime
- ASB
- Problem solving with partners
- Local engagement/meetings

Prevention Hub

- Problem solving with partners (enhanced strategic level)
- Expert level support to all officers – ASB/Licensing/OSARA
- Oversight of NTE
- Licensing
- Designing Out Crime
- MCV
- Offender management

Multi Agency Targeted Operations

- Violence against Women and Girls (VAWG)
 - Op MARSEILLES: Over-arching OSARA Plan
 - Op LEDGER: Tackling Accosting
 - Hybrid Event at Folkestone Police Station 26/04/2023
 - Walk and Talk 07/07/2023, 20/10/23, 08/12/23
- Op SENTRY: Road Safety in the district
- Op PIGLET: Tackling organised cooking oil theft
- Op ASSIST: Environmental & Waste Crime (vehicular)
- Op CHINOOK: NTF Response to targeted areas of concerns
- Op SCEPTRE: Tackling knife crime

Page 27



My Community Voice

Protecting the neighbourhoods of Kent and Medway

MCV is a two-way engagement tool brought to you by Kent Police

Find out what's happening in your area



Receive alerts from your local officers

Tell us what matters most to you



Sign up



Sign up today and make your voice count



Find out more www.MyCommunityVoiceKent.co.uk



Crime data

Profound reduction in retail theft in Town Centre Wards (Harbour and Central)

Folkestone Central Ward: -18.7% in financial year, -13.9% in rolling year
Folkestone Harbour Ward: -80% in financial year, -57.1% in rolling year

Significant reductions in all crime over the financial,
with notable reductions in vehicle crime (TFMV -83% in Central Ward)

Folkestone Central Ward: -25% victim-based crime, -3% crime against society -22% all crime
Folkestone Harbour Ward: -22% victim-based crime -17% all crime (+19% crimes against society)

The increase in crime against society in Harbour ward is driven by a 133% increase in drug possession but this arises from proactive policing and significant increase in stop and search drug finds.

Significant reductions in ASB

Folkestone Harbour Ward: -10% in financial year, -11% in rolling year
Folkestone Central Ward: -75% in financial year, -126% in rolling year

Protecting people susceptible to radicalisation

Page 30



The aim of Prevent is to stop people from becoming terrorists or supporting terrorism. The objectives of Prevent are to: tackle the ideological causes of terrorism. intervene early to support people susceptible to radicalisation. enable people who have already engaged in terrorism to disengage and rehabilitate

Section 36 CTSA 2015 sets out the duty for local authorities to ensure that there is a local panel in place to assess, and to provide support for, people **susceptible** to being drawn into terrorism.¹ For the purpose of this guidance, the term 'Channel' refers to the local authority-led support and the duty as set out in CTSA 2015. In England and Wales, this duty is met through 'Channel panels'.



FOLKESTONE & HYTHE DISTRICT
**COMMUNITY SAFETY
PARTNERSHIP**

This page is intentionally left blank